

FARM News

October 2021

Vet Portfolio

Brian Keown
Sean O'Neill
Stephen Wilson
Nigel Edwards
Maciej Ligus
Brigid King
Ina Doherty
Mike Reynolds
Kerrie – Anne Ryan (SA)

Pneumonia Update

This month we've seen several cases of pneumonia in Animals ranging from neonatal calves right through to finishing animals and adult cattle. Whilst the costs involved in treating these animals are obvious, what isn't always as easy to appreciate is the other costs involved- reduction in daily live weight gain, increase in labour and reduced feed conversion efficiency. In many outbreaks these mean that the true costs are actually 2-3 times higher than the obvious costs. With this in mind, prevention is critical and having an appropriate vaccination strategy in place can form the backbone of this. Before embarking on a vaccination programme there are several points to consider:

- **What age of animals are you aiming to protect?**

Different vaccines are appropriate for different ages of calves, with intra-nasal vaccines being the best option for very young calves less than three months old.

- **What are the high risk times for your animals?**

For dairy calves this is often the first 6-8 weeks of life, whilst for suckled calves it is housing and weaning. Ensuring that animals have completed their vaccination course before the high risk period is key to success.

Red Tractor Update – Johnes Risk Assessment and Management Plan

All red tractor dairy farms will now have enrol in AHWNI Johnes control program and complete a Johnes risk assessment and management plan with an AHWNI Johnes trained vet. The risk assessment will look at different sections of the farm procedures i.e. calving, calf rearing, colostrum management etc.

The Vet will then give three recommendations per farm.

The Vet will also fill out a vet declaration, which is required for the red tractor inspection.

Please ask any of our vets or in practice for any information about the Johnes control program.

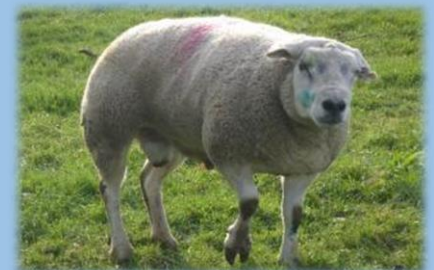


Lameness in Sheep

The infectious causes of lameness, scald, foot-rot and Contagious Ovine Digital Dermatitis (CODD), make up the majority of cases but non-infectious causes such as shelly hoof, white line disease/abscesses and toe granulomas can also be important.

Lameness higher up the leg are generally individual issues e.g. elbow arthritis in breeding rams. Correct identification of the cause of lameness is important as treatment varies between the various conditions.

Ask any of our vets about more information about the best way to treat and prevent lameness in your flock.



 **BVC FARM VETS**



11 Church Street, Ballygawley BT70 2HA - 028 85567150

Opened Mon - Fri 08:30-18:00 | Sat 09:00-16:00 | Closed for Lunch 13:30-14:00

19 The Diamond, Pomeroy BT70 2QU - 028 87759358

Opened Mon - Fri 09:00-18:00 | Wed & Sat 09:00-13:00 | Closed for Lunch 13:00-14:00

Unit 5, Hamilton Park, Tamnamore BT71 6HW - 028 87726805

Opened Mon - Fri 09:00-17:30 | Sat 09:00-13:00 | Closed for Lunch 13:30-14:00

